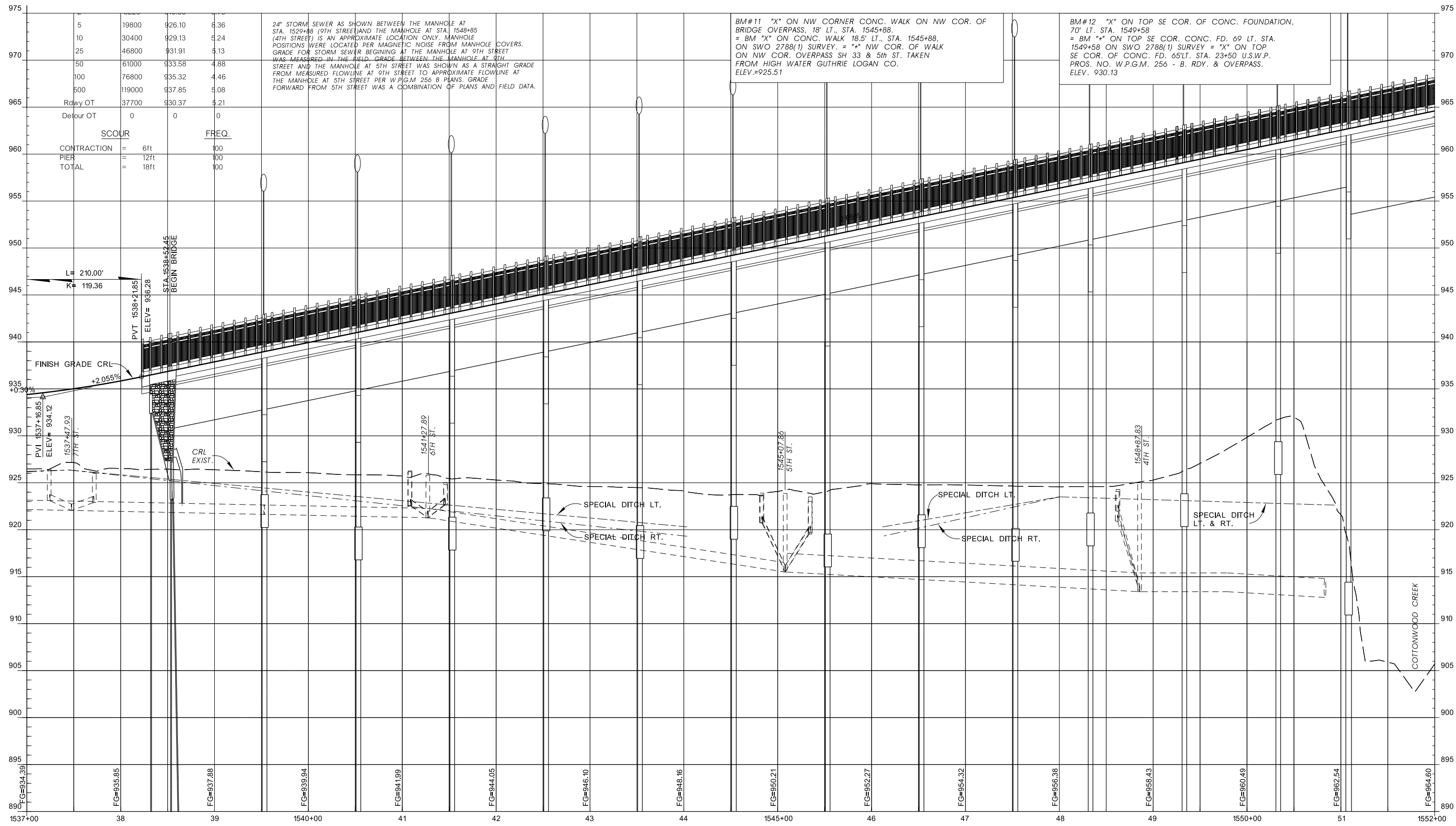


FED. ROAD DIST. NO.	STATE	JOB PIECE NO.	FISCAL YEAR	SHEET NO.	TOTAL SHEETS
6	OKLA.				
DESCRIPTION		REVISIONS	DATE		



24" STORM SEWER AS SHOWN BETWEEN THE MANHOLE AT STA. 1529+88 (9TH STREET) AND THE MANHOLE AT STA. 1548+85 (4TH STREET) IS AN APPROXIMATE LOCATION ONLY. MANHOLE POSITIONS WERE LOCATED PER MAGNETIC NOISE FROM MANHOLE COVERS. GRADE FOR STORM SEWER BEGINING AT THE MANHOLE AT 9TH STREET WAS MEASURED IN THE FIELD. GRADE BETWEEN THE MANHOLE AT 9TH STREET AND THE MANHOLE AT 5TH STREET WAS SHOWN AS A STRAIGHT GRADE FROM MEASURED FLOWLINE AT 9TH STREET TO APPROXIMATE FLOWLINE AT THE MANHOLE AT 5TH STREET PER W.P.G.M. 256 - B PLANS. GRADE FORWARD FROM 5TH STREET WAS A COMBINATION OF PLANS AND FIELD DATA.

BM#11 "X" ON NW CORNER CONC. WALK ON NW COR. OF BRIDGE OVERPASS, 18' LT., STA. 1545+88.
= BM "X" ON CONC. WALK 18.5' LT., STA. 1545+88, ON SWO 2788(1) SURVEY. = "+" NW COR. OF WALK ON NW COR. OVERPASS SH 33 & 5th ST. TAKEN FROM HIGH WATER GUTHRIE LOGAN CO. ELEV.=925.51

BM#12 "X" ON TOP SE COR. OF CONC. FOUNDATION, 70' LT. STA. 1549+58.
= BM "+" ON TOP SE COR. CONC. FD. 69 LT. STA. 1549+58 ON SWO 2788(1) SURVEY = "X" ON TOP SE COR. OF CONC. FD. 65' LT. STA. 23+50 U.S.W.P. PROS. NO. W.P.G.M. 256 - B. RDY. & OVERPASS. ELEV. 930.13

Y:\Division 4\21860 (04) \PNP\21860_Profile_50_3.dgn

DESIGN	
DRAWN	MRB 8/16
CHECKED	
APPROVED	
SQUAD	GREEN

OKLAHOMA DEPARTMENT OF TRANSPORTATION
ROADWAY DESIGN DIVISION

PROFILE SHEET

STATE JOB NO. 21860(04) SHEET NO. R025
LOGAN CO. SH-33